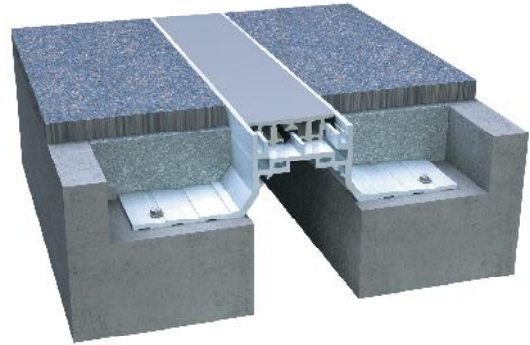


101 Series Recess Mount

A01 - Floor to Floor

A02 - Floor to Wall



Movement Rating ± 25%

Product Guide



Thermal



Interior



Fire Rated
Option



Vapor Barrier
Option

- ▶ Dual durometer seal provides secure fit and optimal flexibility
- ▶ 101,104,112,113,118 A07/A09 Recessed modular frames for minimal sight line
- ▶ Adaptable to many finishes, including ceramic tile, marble, stone, vinyl tile and carpet
- ▶ Seamlessly integrates with the following wall and ceiling systems: 101,104,112,113,118 A07/A09
- ▶ Easy to clean flush seals. No dirt or water traps
- ▶ Snap-fit design for easy on site assembly
- ▶ Mill finish aluminum
- ▶ Integral vapor barrier option available
- ▶ Standard seal colors: black, beige, gray, off white and bright white. Custom colors available upon request.

Application	System	W		H1		H2		S		B		Movement +/-			
		Joint Width		Frame Height 1		Height 2		Sightline		Blockout		Horizontal		Vertical	
		US	mm	US	mm	US	mm	US	mm	US	mm	US	mm	US	mm
Floor to Floor	101-A01-025	1"	25	1 1/2"	38	*	*	1"	25	2 1/2"	64	1/4"	6	1/4"	6
	101-A01-038	1 1/2"	38	1 1/2"	38	*	*	1 7/16"	36	2 1/2"	64	3/8"	10	3/8"	10
	101-A01-050	2"	51	1 1/2"	38	*	*	1 7/8"	47	2 1/2"	64	1/2"	13	1/2"	13
	101-A01-075	3"	76	1 1/2"	38	*	*	2 7/8"	73	2 1/2"	64	3/4"	19	3/4"	19
Floor to Wall	101-A02-025	1"	25	1 1/2"	38	*	*	1"	25	2 1/2"	64	1/4"	6	1/4"	6
	101-A02-038	1 1/2"	38	1 1/2"	38	*	*	1 7/16"	36	2 1/2"	64	3/8"	10	3/8"	10
	101-A02-050	2"	51	1 1/2"	38	*	*	1 7/8"	47	2 1/2"	64	1/2"	13	1/2"	13
	101-A02-075	3"	76	1 1/2"	38	*	*	2 7/8"	73	2 1/2"	64	3/4"	19	3/4"	19

Standard frame height for recessed side 1 1/2" (38mm), 25mm and 50mm available

IPC.802/REV.10

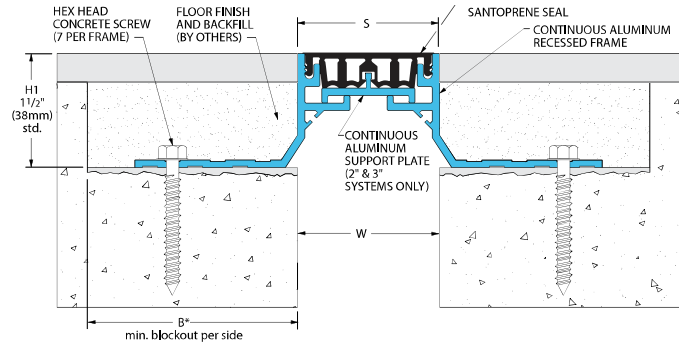
Inprocorp.com • 800.222.5556 • 262.679.9010
World Headquarters S80 W18766 Apollo Drive, Muskego, WI 53150 USA

JOINTMASTER®
EXPANSION JOINT SYSTEMS
A DIVISION OF INFRO®

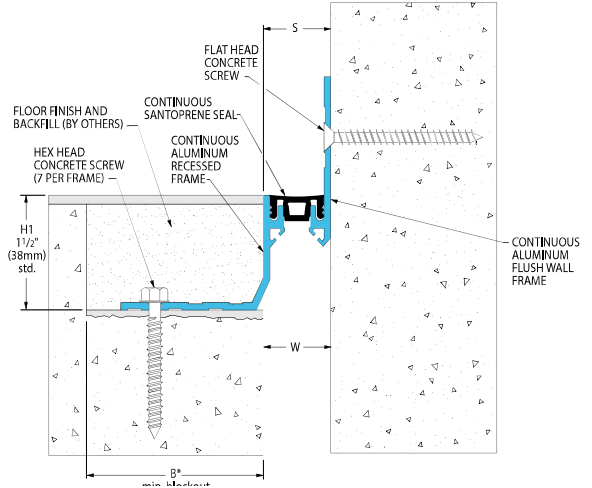
101 Series

Recessed Mount Floor Systems

101-A01 Floor/Floor
(2" (50mm) system shown)



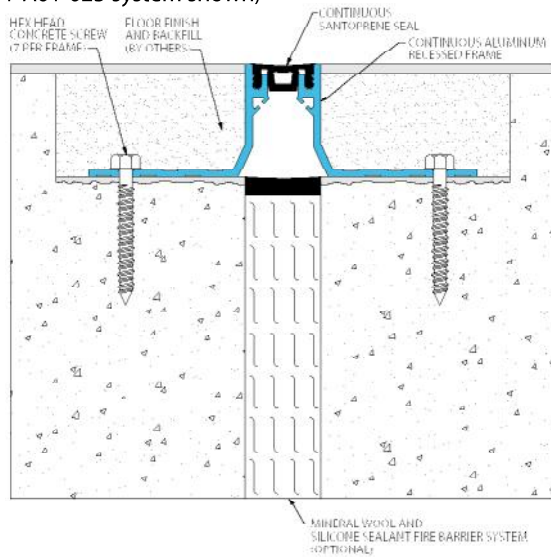
101-A02 Floor/Wall
(1" (25mm) system shown)



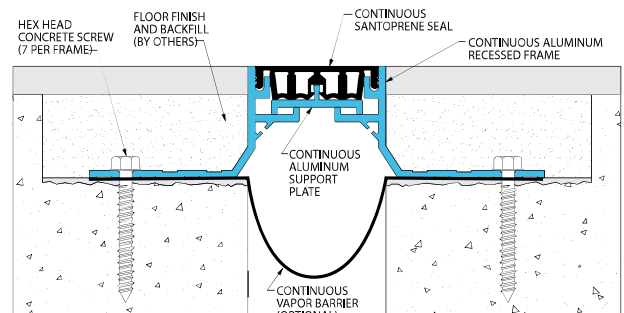
101 Series

Options

Mineral Wool & Sealant Fire Barrier System
(101-A01-025 system shown)



Integral Vapor Barrier
(101-A01-050 system shown)



Fire Blanket System
(101-A01-050 system shown)

