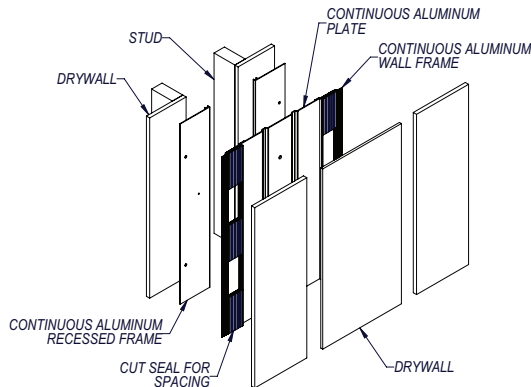


Installation Instructions

Joint System: 233 - A07 (8" to 18" Systems)

Note: Verify that the structural gap and blockout dimensions are in conformance with submittal data before beginning installation. If this is a Fire Rated Assembly, the fire barrier must be installed before the Architectural Joint System. Refer to the fire barrier instructions for specific system installation.

Figure 1 (233-A07 Wall to Wall shown)



1. Recess 5/8" drywall as per the architectural drawings.

Figure 1

2. Cut the aluminum components to the required length. Attach the continuous Aluminum Wall Frames (J1A030-F) to the wall using #8 x 2" flat head screws (JK061) 18" on center.

Figure 2

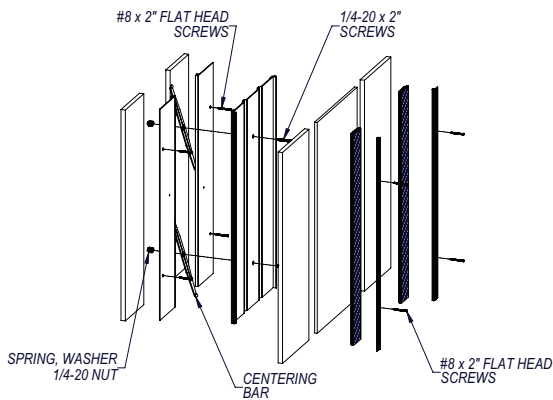


Figure 2

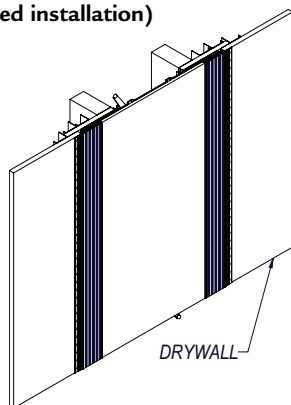
3. Attach the Continuous Aluminum Recessed Frames using #8 x 2" flat head screws (JK061) 18" on center.
4. Assemble the continuous aluminum plate and centering bars using 1/4-20 x 2" screws, spring, washers and 1/4-20 nut. Align centering bars parallel to the flush plate.
5. Position the assembled continuous aluminum plate onto the recessed frames. Tighten the screws to engage the centering bars in the recessed frames.
6. Press the santoprene seal into the frames.

Figure 3

7. Feather and finish flanges with joint compound. Attach drywall as needed to complete the installation.

Figure 3

(233-A07 completed installation)



IPC.937/REV.1



Installation Questions?

Contact our Installation Hotline 866.EZINPRO
For Sales & Customer Service call 800.222.5556

INPRO CORPORATION
Interior and Exterior Architectural Products