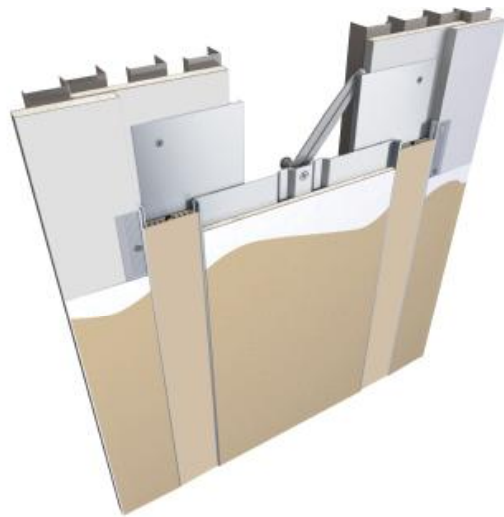


233 Series

A07 - Wall to Wall
A09 - Wall to Corner



Movement Rating \pm 25%-50%

Product Guide



- ▶ Recessed mount frames for minimal sightline
- ▶ Dual durometer seal provides secure fit and optimal flexibility
- ▶ Center bar and compression spring system ensures pan assembly is correctly repositioned after seismic movement
- ▶ System seamlessly integrates with 221, 222, 223
- ▶ Designed for 5/8" (16mm) drywall installations
- ▶ Pan uses 3/8" (10mm) drywall to maintain wall finish through joint span
- ▶ Excellent thermal movement accommodations
- ▶ Standard seal colors: black, beige, gray, off white and bright white. Custom colors available upon request.

Application	System	W		H1		H2		S		B		Movement +/-			
		Joint Width		Frame Height 1		Height 2		Sightline		Blockout		Horizontal		Vertical	
		US	mm	US	mm	US	mm	US	mm	US	mm	US	mm	US	mm
	233-A07-200	8"	200	5/8"	16	3/8"	10	6"	150	*	*	4"	102	4"	102
	233-A07-250	10"	250	5/8"	16	3/8"	10	6"	150	*	*	5"	127	5"	127
	233-A07-300	12"	300	5/8"	16	3/8"	10	6"	150	*	*	6"	152	6"	152
	233-A07-350	14"	350	5/8"	16	3/8"	10	6"	150	*	*	7"	178	7"	178
	233-A07-400	16"	400	5/8"	16	3/8"	10	6"	150	*	*	8"	203	8"	203
	233-A07-450	18"	450	5/8"	16	3/8"	10	6"	150	*	*	9"	229	9"	229
	233-A09-200	8"	200	5/8"	16	3/8"	10	3"	75	*	*	2"	51	2"	51
	233-A09-250	10"	250	5/8"	16	3/8"	10	3"	75	*	*	2 1/2"	64	2 1/2"	64
	233-A09-300	12"	300	5/8"	16	3/8"	10	3"	75	*	*	3"	76	3"	76
	233-A09-350	14"	350	5/8"	16	3/8"	10	3"	75	*	*	3 1/2"	89	3 1/2"	89
	233-A09-400	16"	400	5/8"	16	3/8"	10	3"	75	*	*	4"	102	4"	102
	233-A09-450	18"	450	5/8"	16	3/8"	10	3"	75	*	*	4 1/2"	114	4 1/2"	114

Available in larger widths, please contact Inpro Corporation for more details.

IPC.1567/REV.7

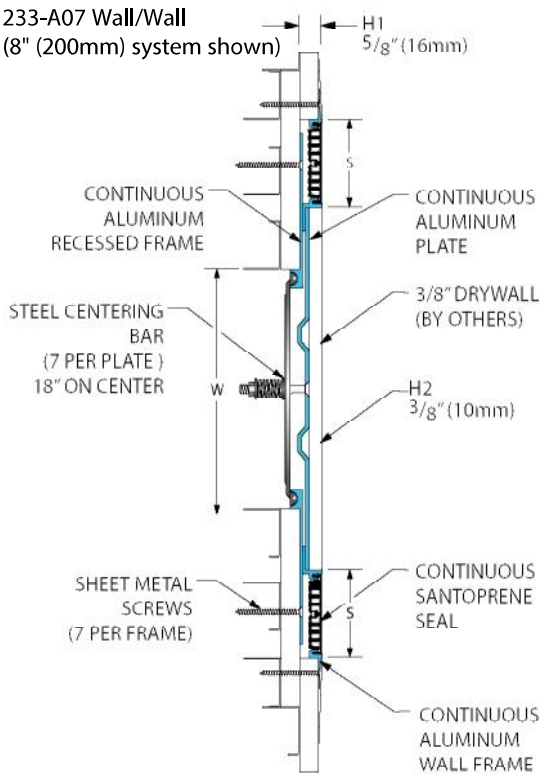
Inprocorp.com • 800.222.5556 • 262.679.9010
World Headquarters S80 W18766 Apollo Drive, Muskego, WI 53150 USA

JOINTMASTER®
EXPANSION JOINT SYSTEMS
A DIVISION OF INFRO®

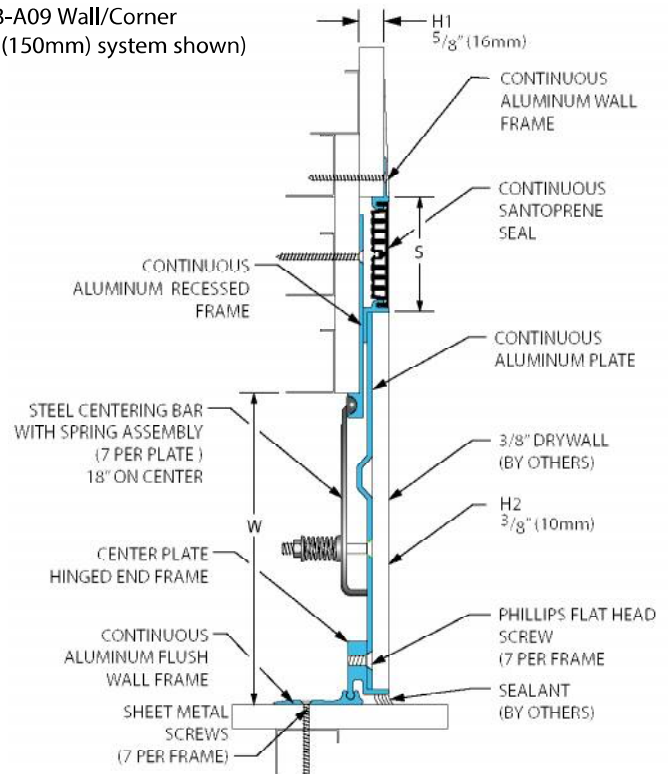
233 Series

Recessed Mount Floor and Wall Systems

233-A07 Wall/Wall
(8" (200mm) system shown)

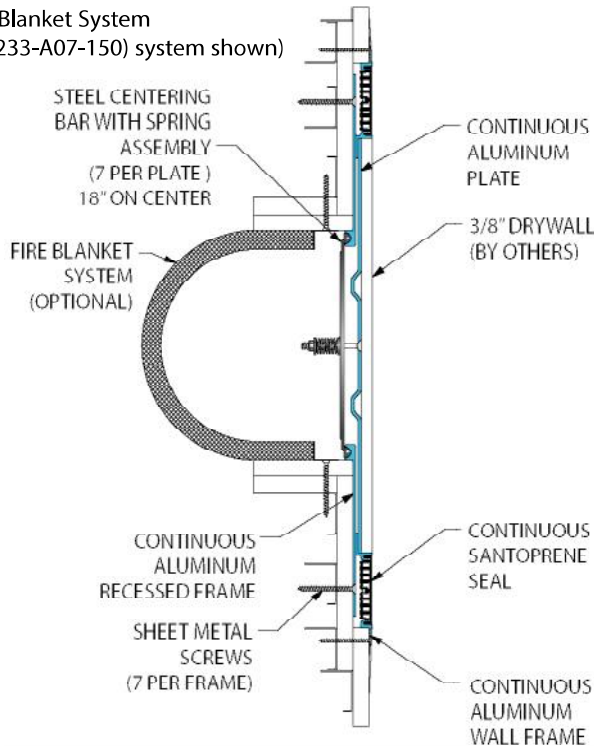


233-A09 Wall/Corner
(6" (150mm) system shown)



233 Series Options

Fire Blanket System
(6" (233-A07-150) system shown)



Vapor Barrier System
(6" (233-A07-150) system shown)

