

300-A02-025

NOTE:
TO DETERMINE BLOCKOUT DEPTH,
DEDUCT THICKNESS OF THE FLOOR
FINISH FROM FRAME HEIGHT

JOINT WIDTH		MOVEMENT ±			
		HORIZONTAL		VERTICAL	
US	mm	US	mm	US	mm
1"	25	1/8"	2	1/8"	3

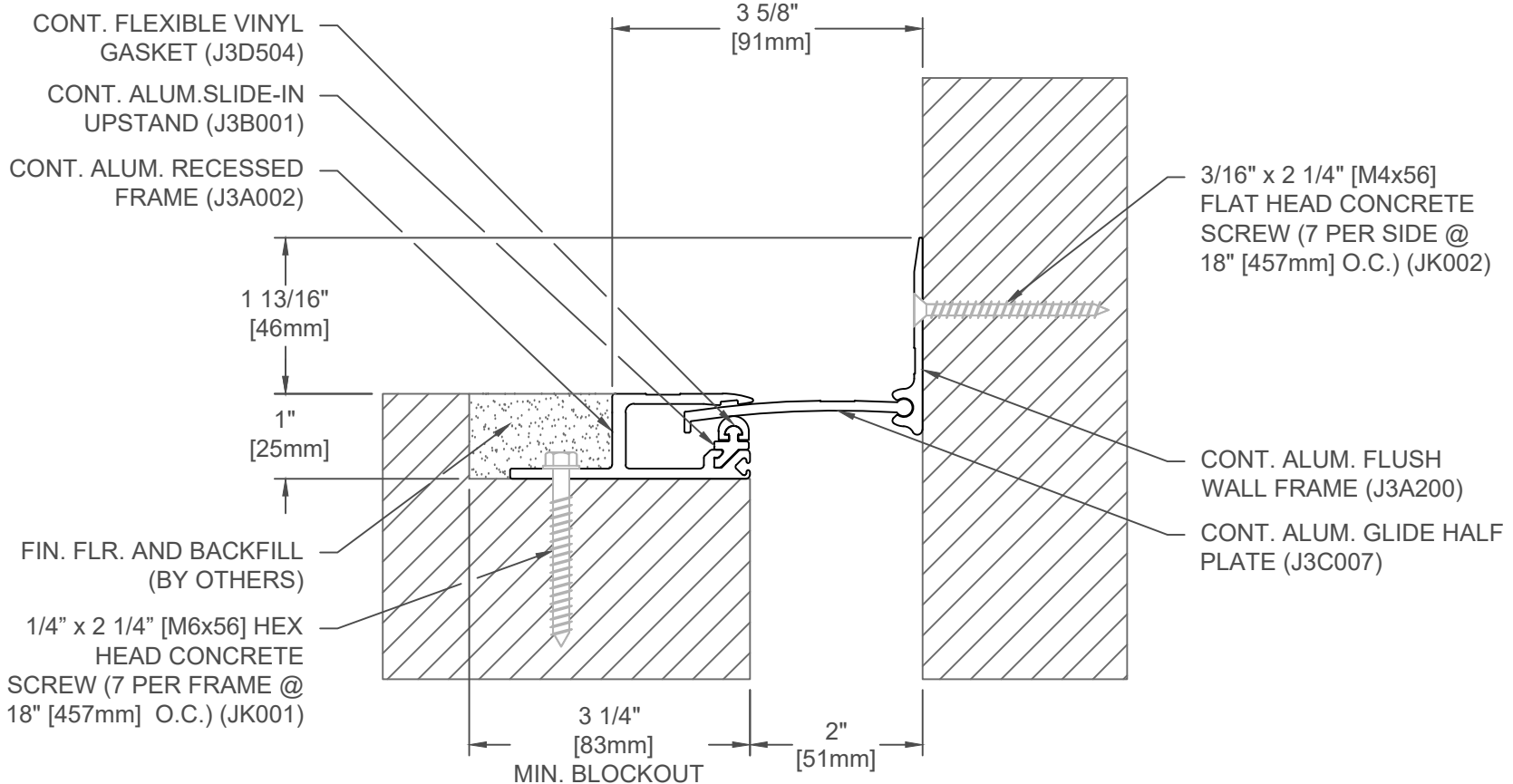
FINISH: MILL
PROJECT:
CUSTOMER:
LOCATION:

APPLICATION-
RECESSED FLOOR/WALL CONDITION
NO BUMP GLIDE PLATE SEISMIC SYSTEM

DATE:	4-20-04
SCALE:	1:2
DOC:	CADJM.016/R2

inpro.

For More Information Visit: Inprocorp.com



300-A02-050

NOTE:
TO DETERMINE BLOCKOUT DEPTH,
DEDUCT THICKNESS OF THE FLOOR
FINISH FROM FRAME HEIGHT

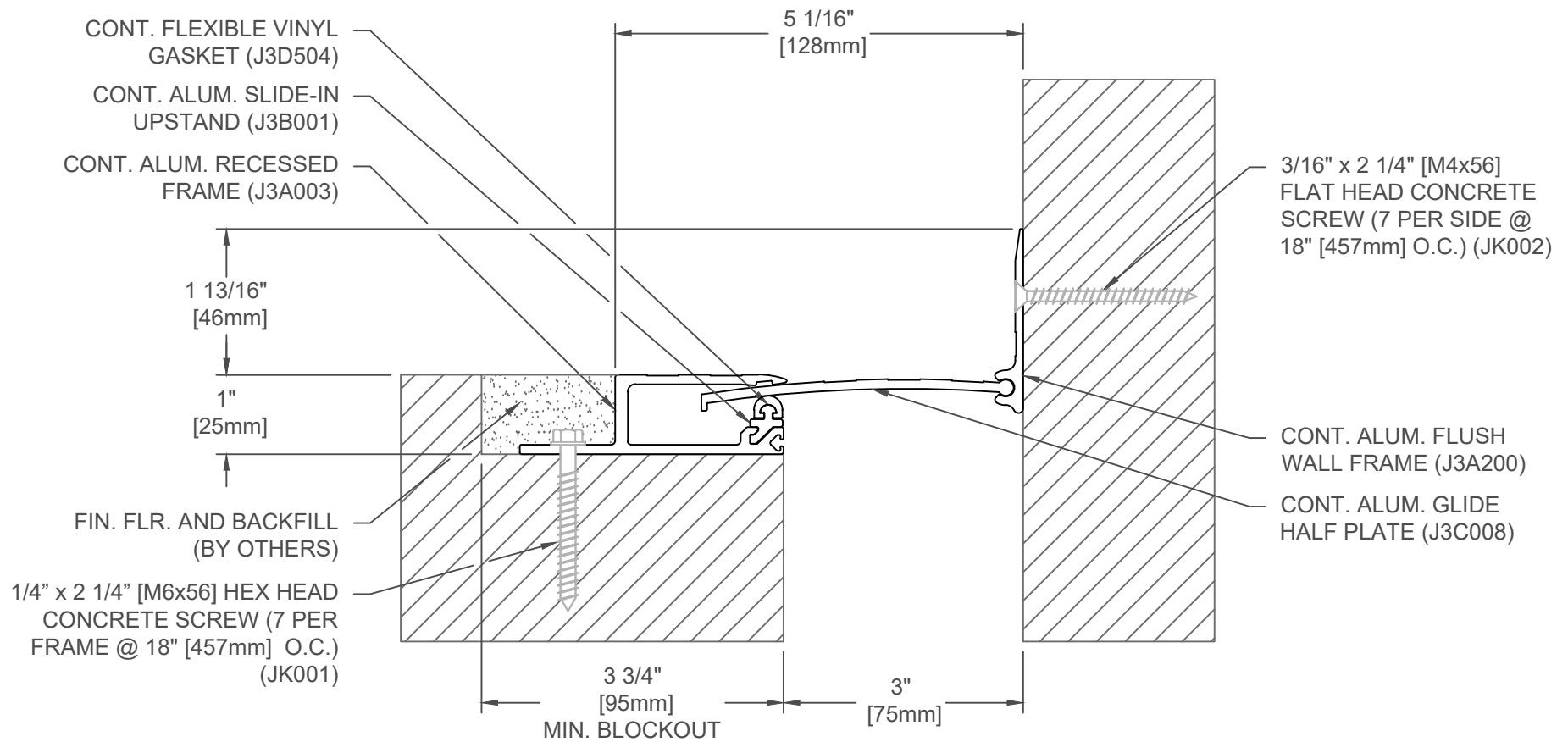
JOINT WIDTH		MOVEMENT ±			
		HORIZONTAL		VERTICAL	
US	mm	US	mm	US	mm
2"	51	3/8"	9	1/4"	6

FINISH: MILL
PROJECT:
CUSTOMER:
LOCATION:

APPLICATION-
RECESSED FLOOR/WALL CONDITION
NO BUMP GLIDE PLATE SEISMIC SYSTEM

DATE:	4-20-04
SCALE:	1:2
DOC:	CADJM.016/R2

For More Information Visit: Inprocorp.com



300-A02-075

NOTE:
TO DETERMINE BLOCKOUT DEPTH,
DEDUCT THICKNESS OF THE FLOOR
FINISH FROM FRAME HEIGHT

JOINT WIDTH		MOVEMENT ±			
		HORIZONTAL		VERTICAL	
US	mm	US	mm	US	mm
3"	76	9/16"	14	3/8"	10

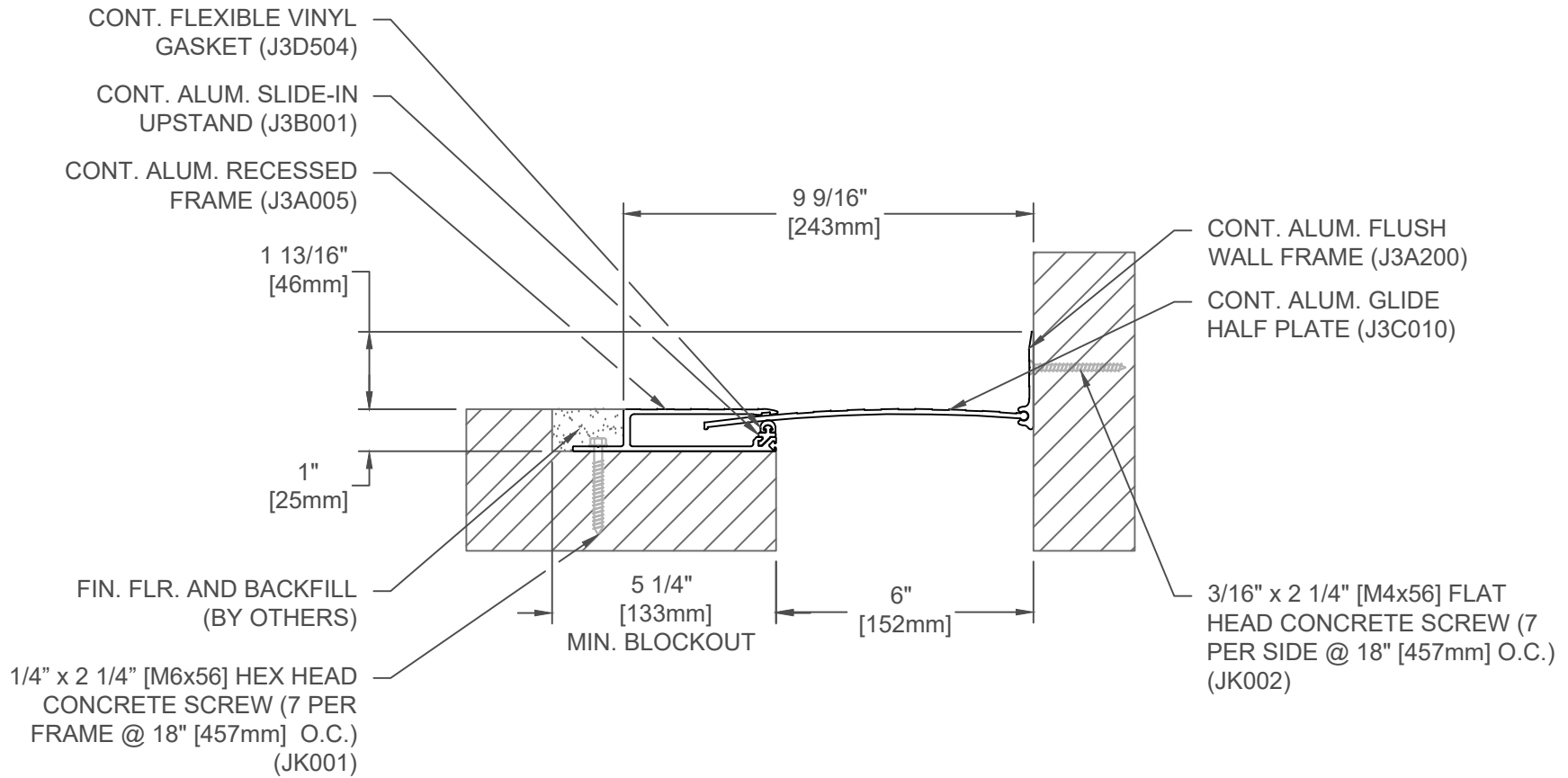
FINISH: MILL
PROJECT:
CUSTOMER:
LOCATION:

APPLICATION-
RECESSED FLOOR/WALL CONDITION
NO BUMP GLIDE PLATE SEISMIC SYSTEM

DATE:	4-20-04
SCALE:	1:2
DOC:	CADJM.016/R2



For More Information Visit: Inprocorp.com



300-A02-150

NOTE:
TO DETERMINE BLOCKOUT DEPTH,
DEDUCT THICKNESS OF THE FLOOR
FINISH FROM FRAME HEIGHT

JOINT WIDTH		MOVEMENT ±			
		HORIZONTAL		VERTICAL	
US	mm	US	mm	US	mm
6"	152	1 1/4"	31	3/4"	19

FINISH: MILL
PROJECT:
CUSTOMER:
LOCATION:

APPLICATION-
RECESSED FLOOR/WALL CONDITION
NO BUMP GLIDE PLATE SEISMIC SYSTEM

DATE:	4-20-04
SCALE:	1:4
DOC:	CADJM.016/R2

inpro.
For More Information Visit: Inprocorp.com