

401 Series

A01 - Floor to Floor

A02 - Floor to Wall



Movement Rating \pm 50%

Product Guide



- ▶ Surface-mounted frames allow for use in new, existing and renovation conditions
- ▶ System does not require expensive block out conditions.
- ▶ Centerbar support allows for wide spans while providing a sightline of less width than a typical coverplate
- ▶ This architectural joint system can be used on all floor finishes including carpet, VCT and tile
- ▶ Fully seismic centerbar system
- ▶ Low profile (LP) option available for floor to wall conditions

Application	System	W		H1		H2		S		Movement +/-			
		Joint Width		Frame Height 1		Height 2		Sightline		Horizontal		Vertical	
		US	mm	US	mm	US	mm	US	mm	US	mm	US	mm
Floor to Floor	401-A01-050	2"	51	1/8"	3	*	*	8 1/2"	216	1"	25	1"	25
	401-A01-100	4"	102	1/8"	3	*	*	11 3/4"	298	2"	50	2"	50
	401-A01-150	6"	152	3/16"	5	*	*	14 1/2"	368	3"	75	3"	75
	401-A01-200	8"	203	3/16"	5	*	*	16 1/2"	419	4"	100	4"	100
Floor to Wall	401-A02-050	2"	50	1/8"	3	*	*	5 1/4"	132	1"	25	1/2"	13
	401-A02-100	4"	100	1/8"	3	*	*	8"	202	2"	50	1"	25
	401-A02-150	6"	150	3/16"	5	*	*	10 1/4"	259	3"	75	1-1/2"	38
	401-A02-200	8"	203	3/16"	5	*	*	12 1/2"	419	4"	100	2"	51

May be available in larger widths, please contact Inpro Corporation for more details.

IPC.1389/REV.7

Inprocorp.com • 800.222.5556 • 262.679.9010

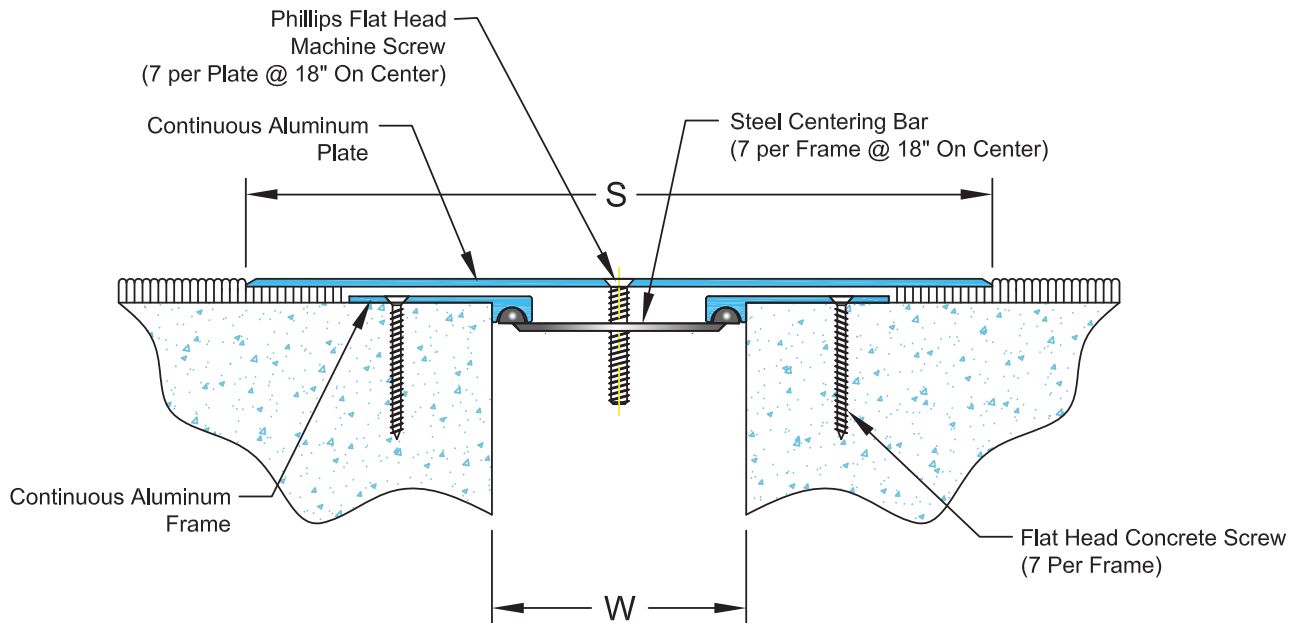
World Headquarters S80 W18766 Apollo Drive, Muskego, WI 53150 USA

JOINTMASTER®
EXPANSION JOINT SYSTEMS
A DIVISION OF INPRO®

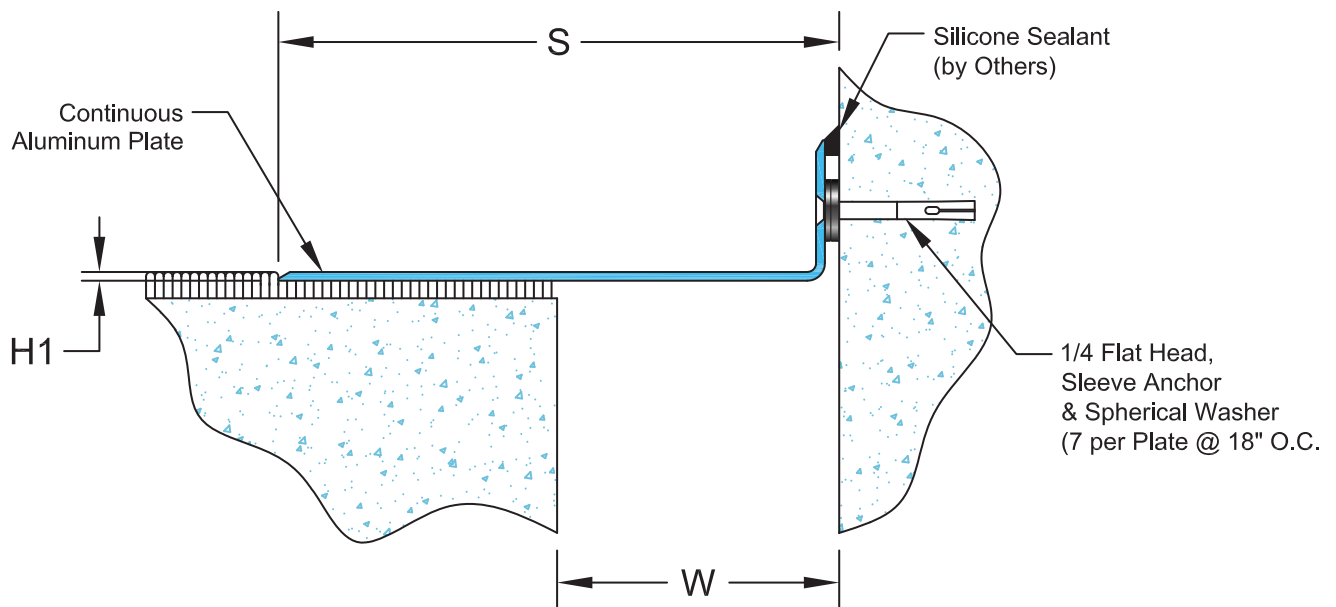
401 Series

Surface Mount Center Bar Floor Seismic Systems

401-A01 Floor/Floor
(4" (100mm) system shown)



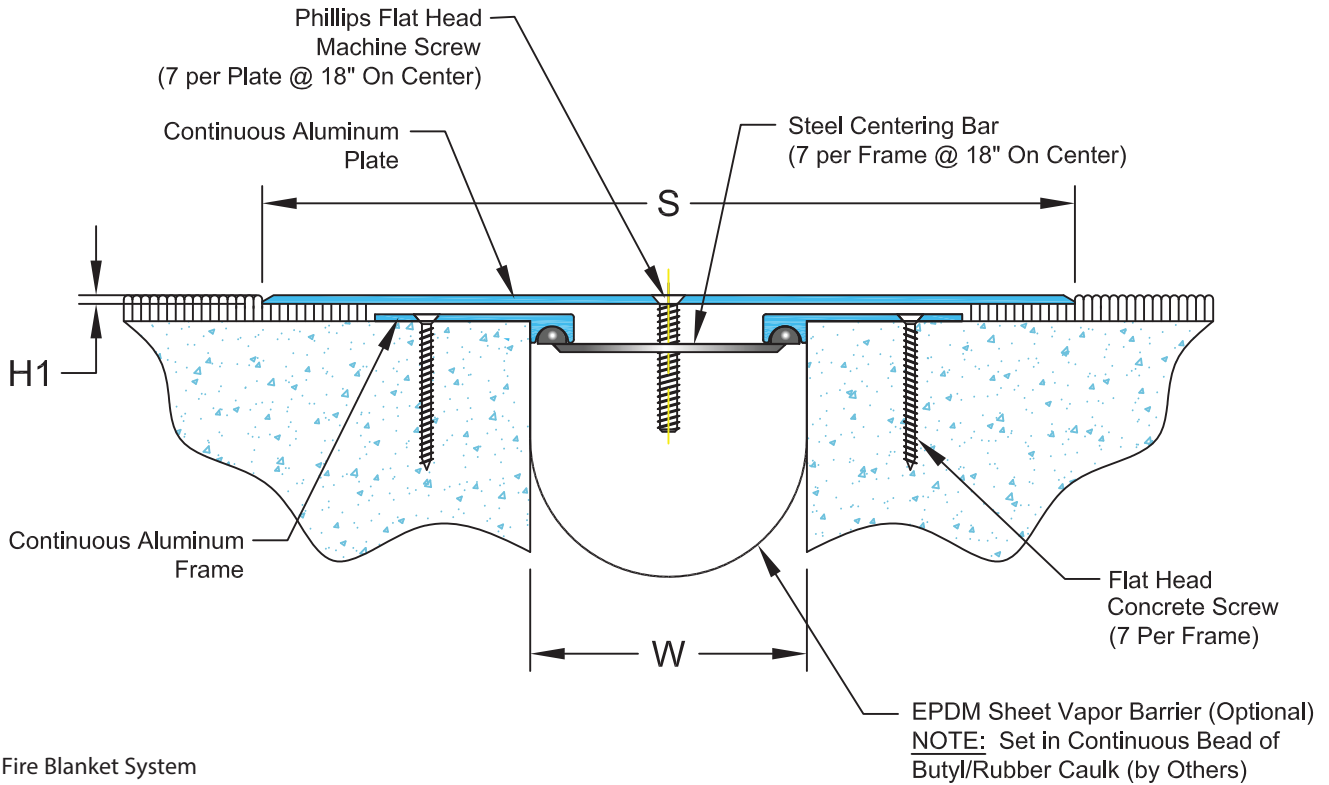
401-A02 Floor/Wall
(4" (100mm) system shown)



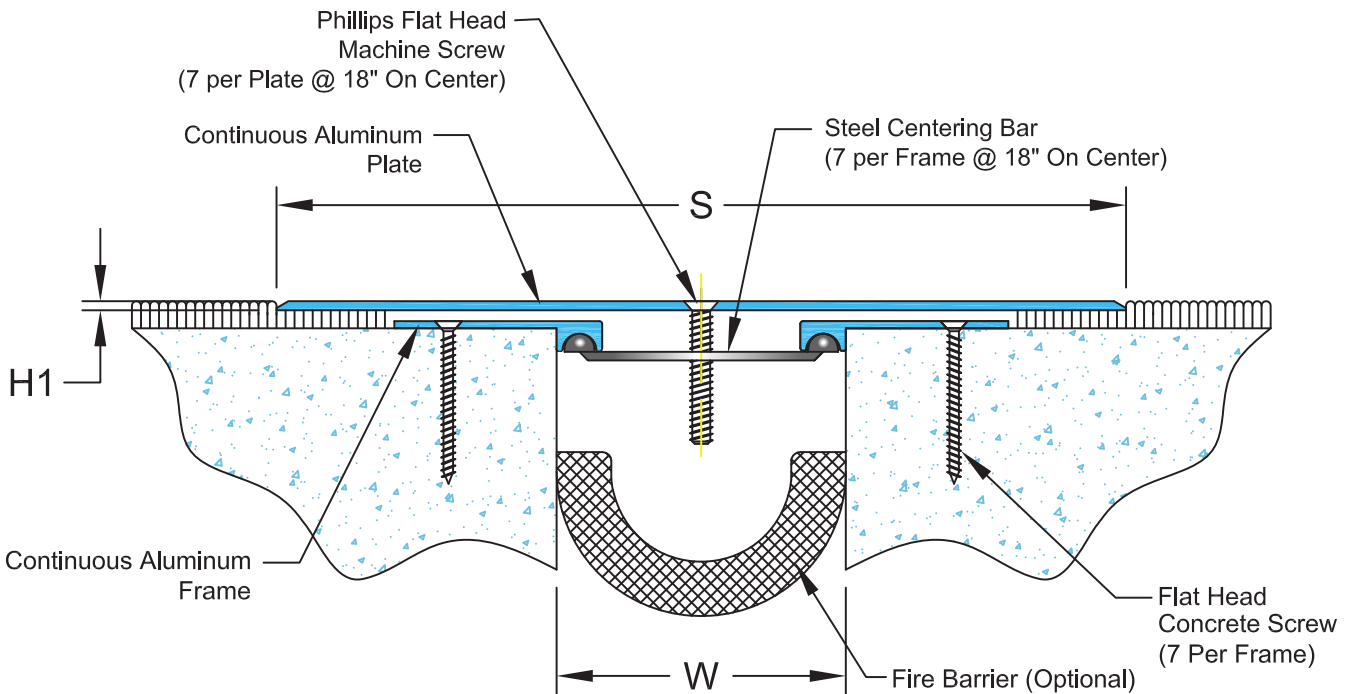
401 Series

Options

Wrap Around Vapor Barrier
(401-A01-100 system shown)



Fire Blanket System
(401-A01-100 system shown)



Inprocorp.com • 800.222.5556 • 262.679.9010

World Headquarters S80 W18766 Apollo Drive, Muskego, WI 53150 USA

JOINTMASTER®
EXPANSION JOINT SYSTEMS
A DIVISION OF INPRO®