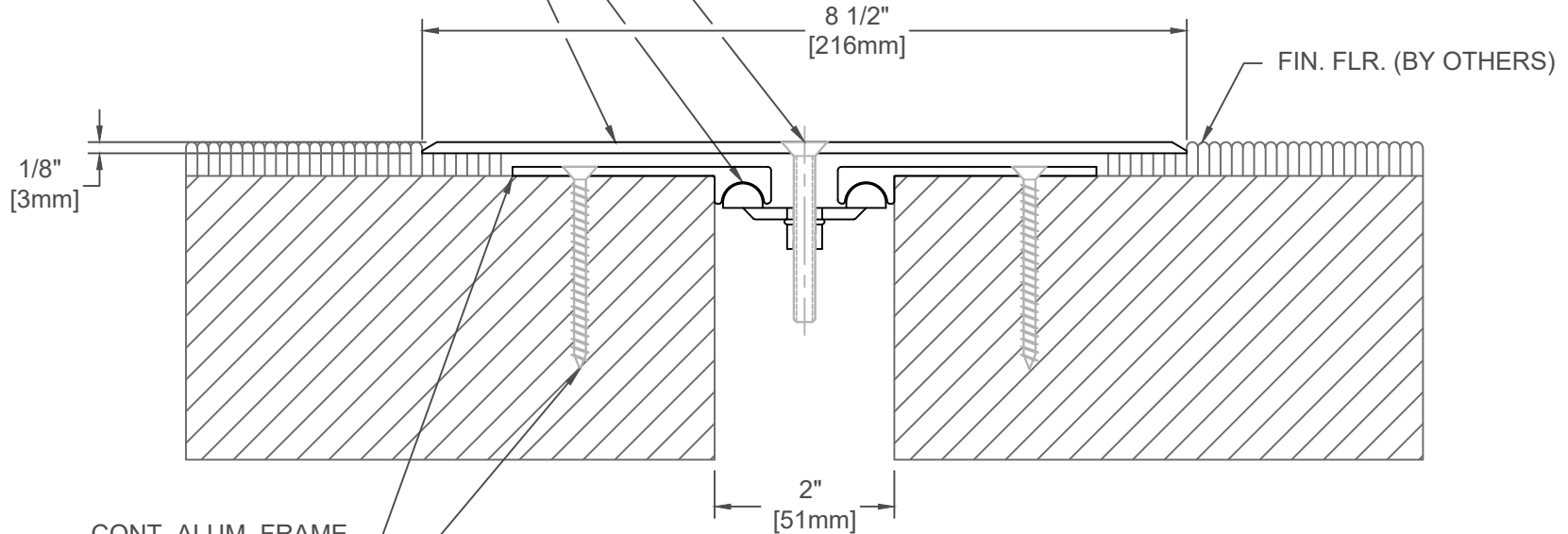


1/4-20 X 2" [M6x1x51] PHILLIPS FLAT
HEAD MACHINE SCREW (7 PER
PLATE @ 18" [457mm] O.C.) (JK031)

STEEL CENTERING BAR (7 PER
FRAME @ 18" [457mm] O.C.) (J4J006)

CONT. ALUM. PLATE (J4C200-F)



CONT. ALUM. FRAME
(J2A002-F)

3/16" x 2 1/4" [M4.5x.75x56]
FLAT HEAD CONCRETE
SCREW (7 PER FRAME @
18" [457mm] O.C.) (JK002)

401-A01-050

JOINT WIDTH		MOVEMENT ±			
		HORIZONTAL		VERTICAL	
US	mm	US	mm	US	mm
2"	51	3/8"	10	1"	25

FINISH: MILL
PROJECT:
CUSTOMER:
LOCATION:

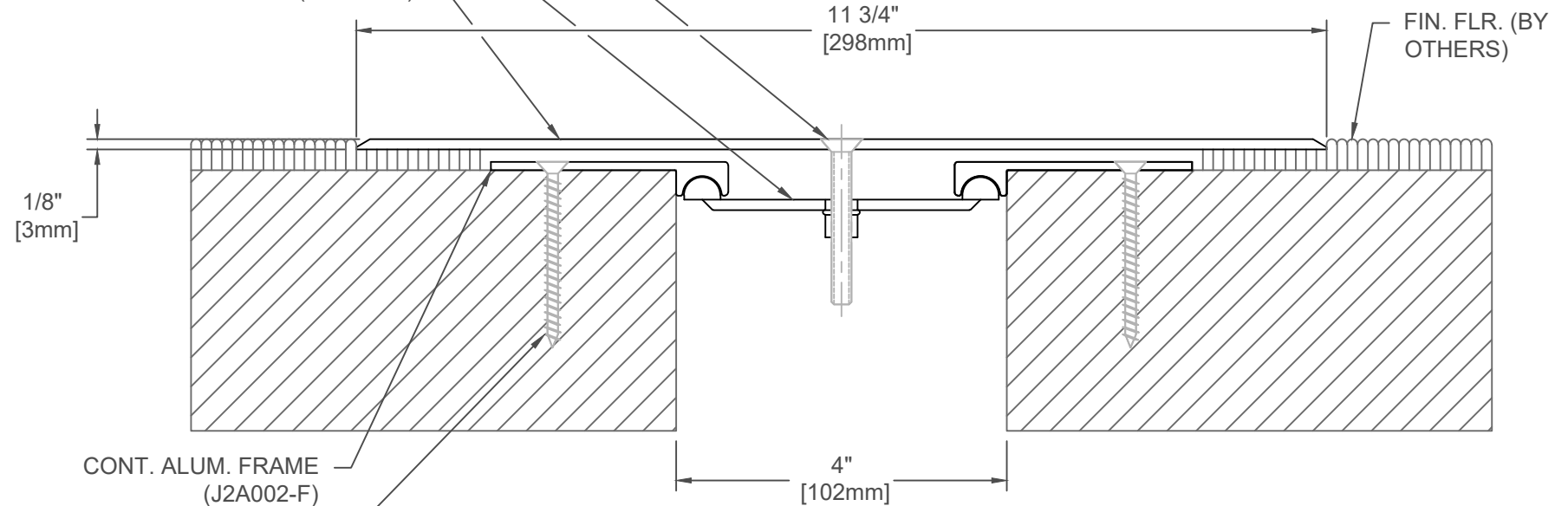
APPLICATION-
FLOOR/FLOOR CONDITION

DATE:	3-21-12
SCALE:	1:2
DOC:	CADJM.043/R1

inpro.

For More Information Visit: Inprocorp.com

1/4-20 X 2" [M6x1x51] PHILLIPS FLAT
 HEAD MACHINE SCREW (7 PER
 PLATE @ 18" [457mm] O.C.) (JK031)
 STEEL CENTERING BAR (7 PER
 FRAME @ 18" [457mm] O.C.) (J4J006)
 CONT. ALUM. PLATE (J4C202-F)



CONT. ALUM. FRAME
 (J2A002-F)
 3/16" x 2 1/4" [M4.5x.75 x 56]
 FLAT HEAD CONCRETE
 SCREW (7 PER FRAME @
 18" [457mm] O.C.) (JK002)

401-A01-100

JOINT WIDTH		MOVEMENT ±			
		HORIZONTAL		VERTICAL	
US	mm	US	mm	US	mm
4"	102	2"	51	2"	51

FINISH: MILL
PROJECT:
CUSTOMER:
LOCATION:

APPLICATION-
 FLOOR/FLOOR CONDITION

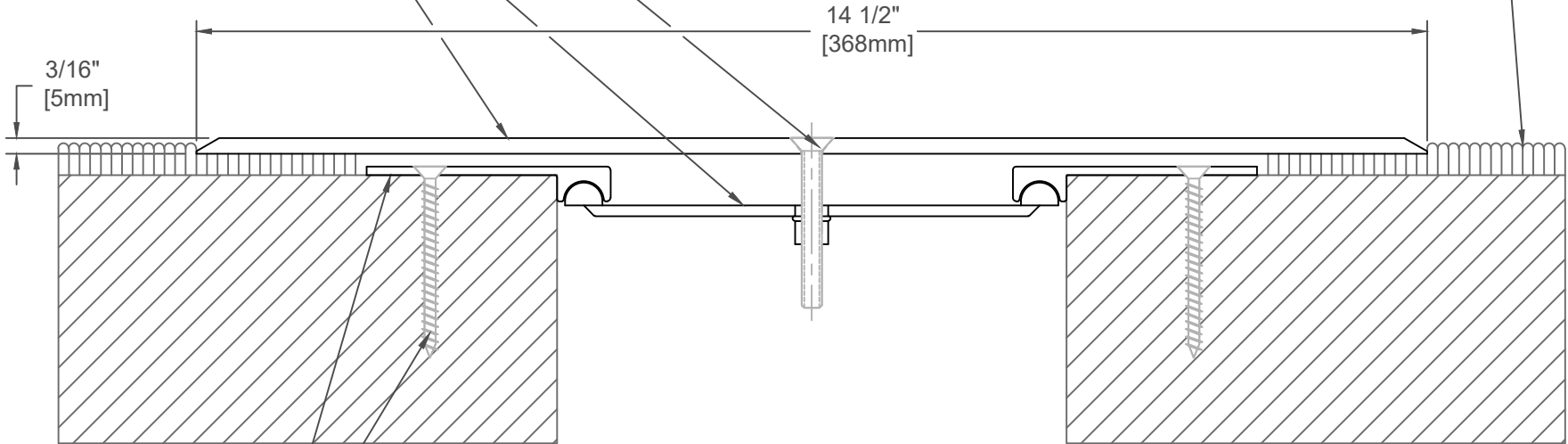
DATE:	3-21-12
SCALE:	1:2
DOC:	CADJM.043/R1

1/4-20 X 2" [M6x1x51] PHILLIPS FLAT HEAD MACHINE SCREW (7 PER PLATE @ 18" [457mm] O.C.) (JK031)

STEEL CENTERING BAR (7 PER FRAME @ 18" [457mm] O.C.) (J4J007)

CONT. ALUM. PLATE (J4C204-F)

FIN. FLR. (BY OTHERS)



CONT. ALUM.FRAME (J2A002-F)

3/16" x 2 1/4" [M4.5x.75 x 56] FLAT HEAD CONCRETE SCREW (7 PER FRAME @ 18" [457mm] O.C.) (JK002)

401-A01-150

JOINT WIDTH		MOVEMENT ±			
		HORIZONTAL		VERTICAL	
US	mm	US	mm	US	mm
6"	152	3"	76	3"	76

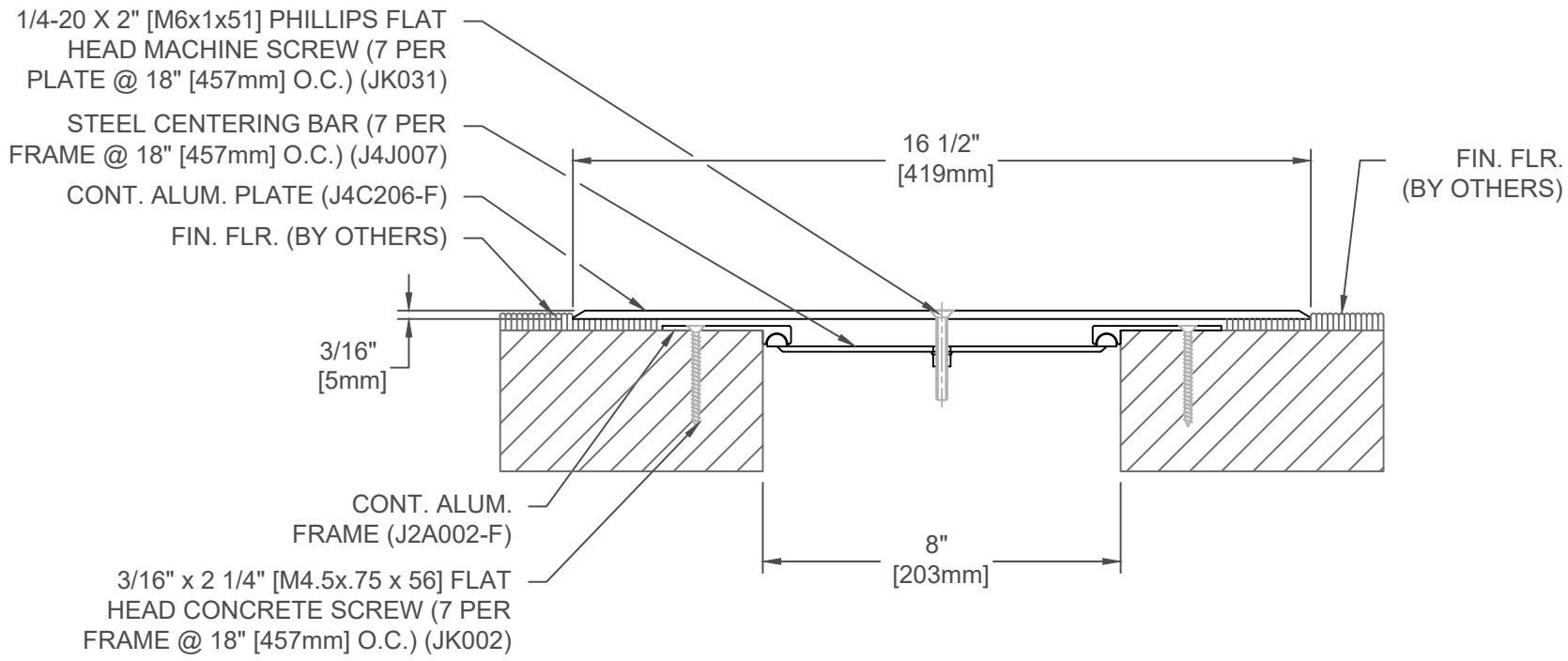
FINISH: MILL
PROJECT:
CUSTOMER:
LOCATION:

APPLICATION-
FLOOR/FLOOR CONDITION

DATE:	3-21-12
SCALE:	1:2
DOC:	CADJM.043/R1



For More Information Visit: Inprocorp.com



401-A01-200

JOINT WIDTH		MOVEMENT ±			
		HORIZONTAL		VERTICAL	
US	mm	US	mm	US	mm
8"	203	4"	102	4"	102

FINISH: MILL
PROJECT:
CUSTOMER:
LOCATION:

APPLICATION-
FLOOR/FLOOR CONDITION

DATE:	3-21-12
SCALE:	1:4
DOC:	CADJM.043/R1

inpro.

For More Information Visit: Inprocorp.com