

# 802 Series

A01 - Floor to Floor

A02 - Floor to Wall



Movement Rating  $\pm 25\%$

## Product Guide



Thermal



Interior



Fire Rated Option



Vapor Barrier Option

- Designed to accommodate various flooring thicknesses from carpet to VCT
- Overlap design reduces sightline
- Easy to install
- Economical solution for retrofit and surface mount installations
- Mill finish aluminum

Application	System	W		H1		H2		S		B		Movement +/-			
		Joint Width		Frame Height 1		Height 2		Sightline		Blockout		Horizontal		Vertical	
		US	mm	US	mm	US	mm	US	mm	US	mm	US	mm	US	mm
Floor to Floor	802-A01-050/3	2"	51	1/8"	3	1/8"	4	2"	51	*	*	1/2"	13	*	*
	802-A01-050/6	2"	51	1/8"	3	1/4"	6	2"	51	*	*	1/2"	13	*	*
	802-A01-050/10	2"	51	1/8"	3	3/8"	10	2"	51	*	*	1/2"	13	*	*

Available in larger widths, please contact Inpro for more details.

IPC.768/REV.5

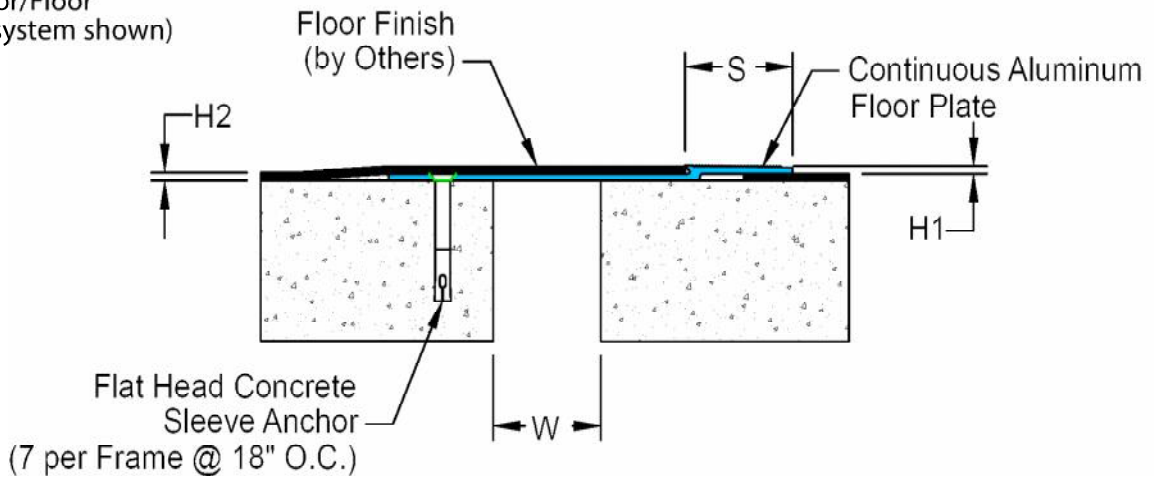
Inprocorp.com • 800.222.5556 • 262.679.9010  
 World Headquarters S80 W18766 Apollo Drive, Muskego, WI 53150 USA

**JOINTMASTER®**  
 EXPANSION JOINT SYSTEMS  
 A DIVISION OF INPRO®

# 802 Series

## Floor and Wall Systems

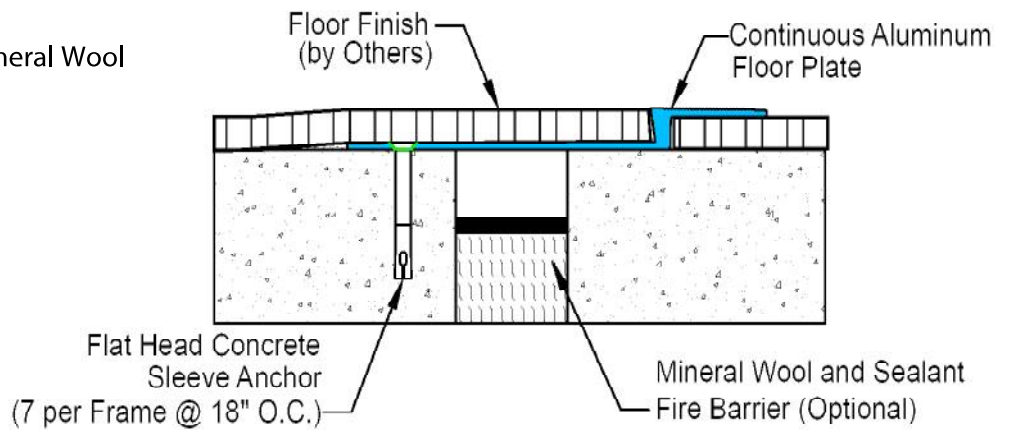
802-A01 Floor/Floor  
(2" (51mm) system shown)



# 802 Series

## Options

802-A01 Floor/Floor With Mineral Wool  
(2" (51mm) system shown)



802-A01 Floor/Floor With Fire Barrier  
(2" (51mm) system shown)

