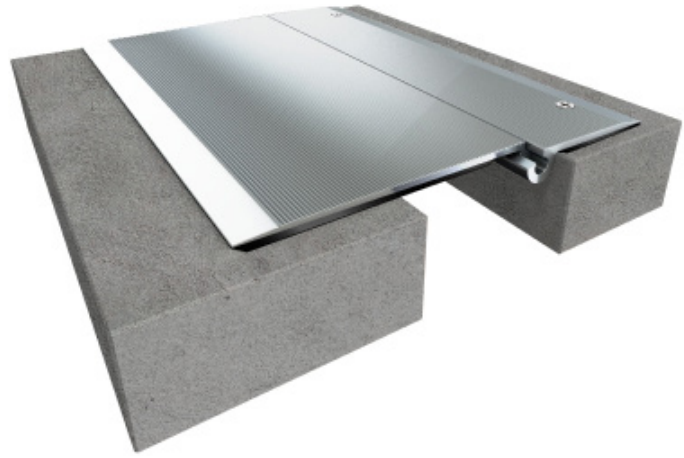


806SD Series

A01 - Floor to Floor

A02 - Floor to Wall



Movement Rating $\pm 50\%$

Product Guide



Thermal



Exterior



Interior



Fire Rated
Option



Vapor Barrier
Option

- ▶ Designed for uneven slab conditions
- ▶ Sound dampening Fiber Reinforced EPDM securely adhered to the bottom
- ▶ Pre-drilled counter-sunk holes for easy installation
- ▶ Applicable for existing conditions, additions and new construction
- ▶ Anti-slip surface serrations

Application	System	W		H1		S		Movement +/-			
		Joint Width		Frame Height 1		Sightline		Horizontal (+/-)		Vertical (+/-)	
		US	mm	US	mm	US	mm	US	mm	US	mm
Floor to Floor	806SD-A01-050	2"	51	1/4"	6	7"	178	$\pm 1"$	± 25	+1/4" / -1"	+6 / -25
	806SD-A01-100	4"	102	1/4"	6	10 1/2"	267	$\pm 2"$	± 51	+5/8" / -2"	+10 / -51
	806SD-A01-150	6"	152	1/4"	6	13"	330	$\pm 3"$	± 76	+7/8" / -2 3/4"	+13 / -71
	806SD-A01-200	8"	203	5/16"	8	17"	432	$\pm 4"$	± 102	+1" / -2 1/2"	+25 / -64
	806SD-A01-250	10"	254	5/16"	8	20"	508	$\pm 5"$	± 127	+1 3/8" / -3"	+35 / -76
	806SD-A01-300	12"	305	5/16"	8	23"	584	$\pm 6"$	± 152	+1 5/8" / -3 1/2"	+41 / -90
Floor to Wall	806SD-A02-050	2"	51	1/4"	6	4"	102	$\pm 1"$	± 25	+1/4" / -1"	+6 / -25
	806SD-A02-100	4"	102	1/4"	6	7 1/2"	191	$\pm 2"$	± 51	+5/8" / -2"	+10 / -51
	806SD-A02-150	6"	152	1/4"	6	10"	254	$\pm 3"$	± 76	+7/8" / -2 3/4"	+13 / -71
	806SD-A02-200	8"	203	5/16"	8	13"	330	$\pm 4"$	± 102	+1" / -2 1/2"	+25 / -64
	806SD-A02-250	10"	254	5/16"	8	17"	432	$\pm 5"$	± 127	+1 3/8" / -3"	+35 / -76
	806SD-A02-300	12"	305	5/16"	8	19"	483	$\pm 6"$	± 152	+1 5/8" / -3 1/2"	+41 / -90

IPC.1010/REV.6

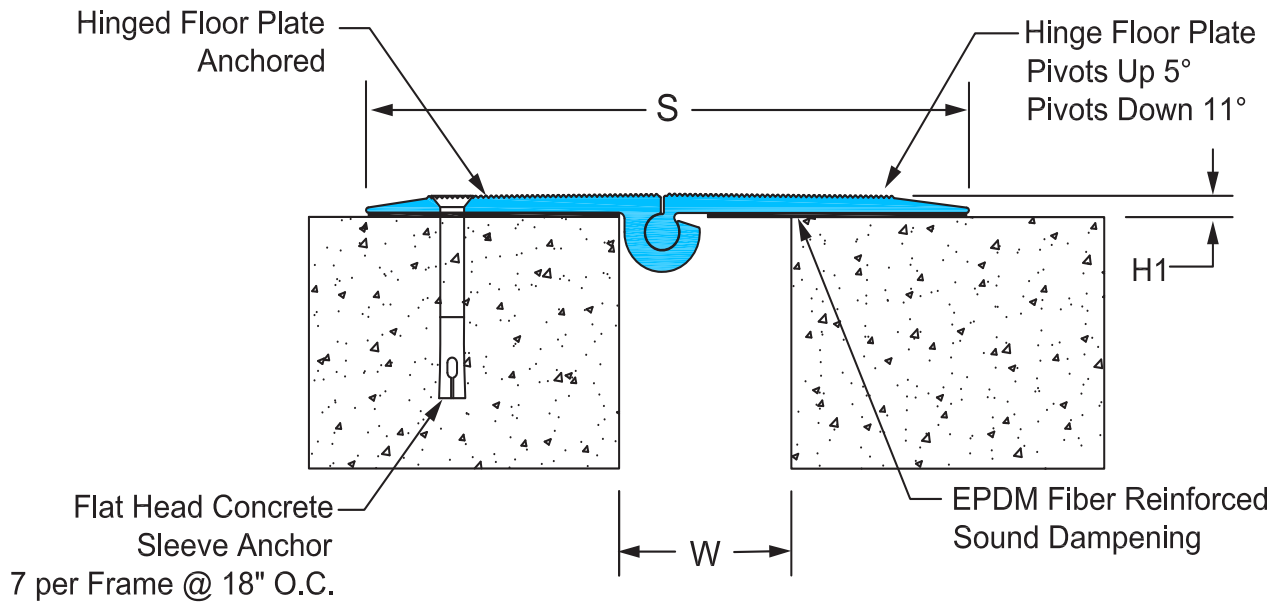
Inprocorp.com • 800.222.5556 • 262.679.9010
World Headquarters S80 W18766 Apollo Drive, Muskego, WI 53150 USA

JOINTMASTER®
EXPANSION JOINT SYSTEMS
A DIVISION OF INPRO®

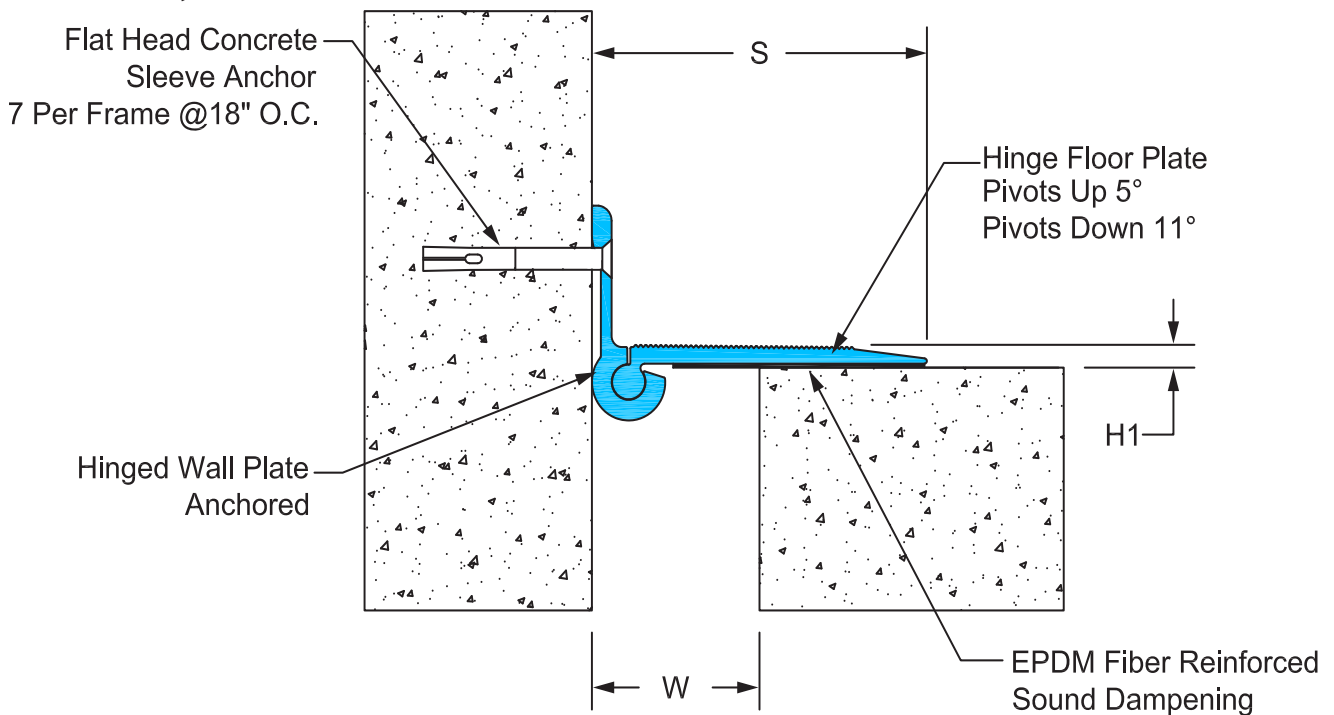
806SD Series

Sound Dampened Cover Plate System

806SD-A01 Floor/Floor (2" (51mm) system shown)



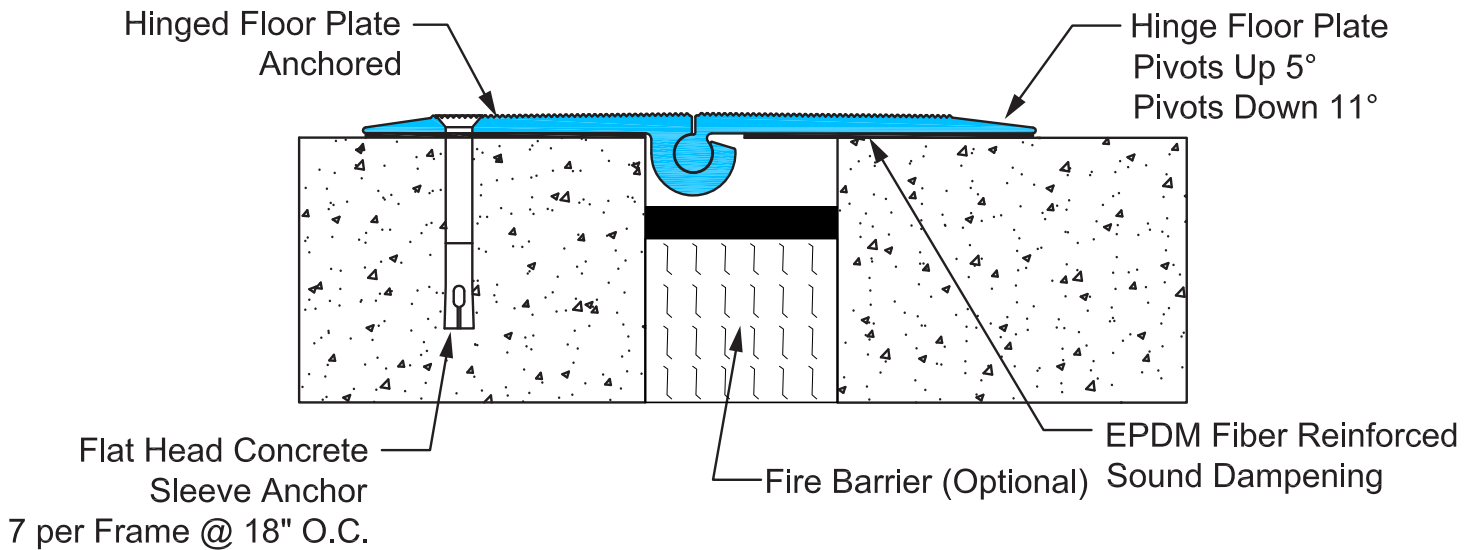
806SD-A02 Floor/Wall (2" (51mm) system shown)



806SD Series

Options

806SD-A01 Floor/Floor With Fire Barrier
(2" (51mm) system shown)



806SD-A01 Floor/Floor With Vapor Barrier
(2" (51mm) system shown)

