

925 Series

Fire Barrier Systems

Floors and Walls - Mineral Wool and Sealant



Movement Rating ± 14-25%

Product Guide



Thermal



Exterior



Interior



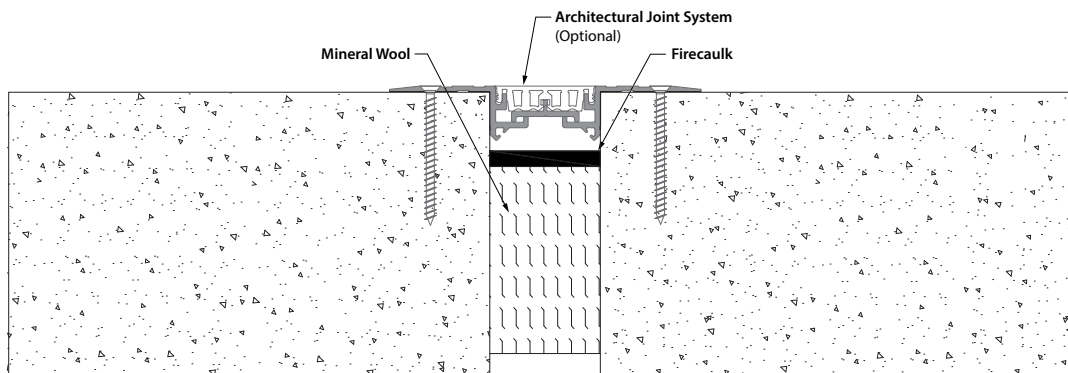
Fire Rated
Option



Vapor Barrier
Option

- ▶ Economical system for joint widths up to 3" [75mm]
- ▶ Mineral wool supplied in 4' [1.2m] long by 4" [100 mm] deep batts. Compressed and friction-held in gap for easy installation
- ▶ UL2079/ULC-S115
- ▶ 2 hour & 3 hour rated options available.
- ▶ Meets "Hose System Test" for masonry walls
- ▶ Horizontal movement only
- ▶ 3 hour system achieves 14% movement
- ▶ 2 hour system achieves 25% movement

Physical Properties	
Property	Result
Density	Nominal 4 lb./ft ³ [64 kg/m ³]
Moisture Absorption	< 1%; inorganic, will not mildew
Service Temperatures	Continuous to 1200°F [649°C]
Linear Shrinkage	0% @ 1050°F [551°C]; <1% @ 1200°F [649°C]
Recovery After 10% Compression	100%
Asbestos	0%
Surface Burning, CAN4-S102, ASTN E84 & UL723	Flame Spread - 5; Smoke Developed - 0
Non Combustibility Can4-S114	Listed as noncombustible by ULC
Non-Corrosive NRC 1.36, ASTM C692, C795 & C871	Will not cause or contribute to corrosion

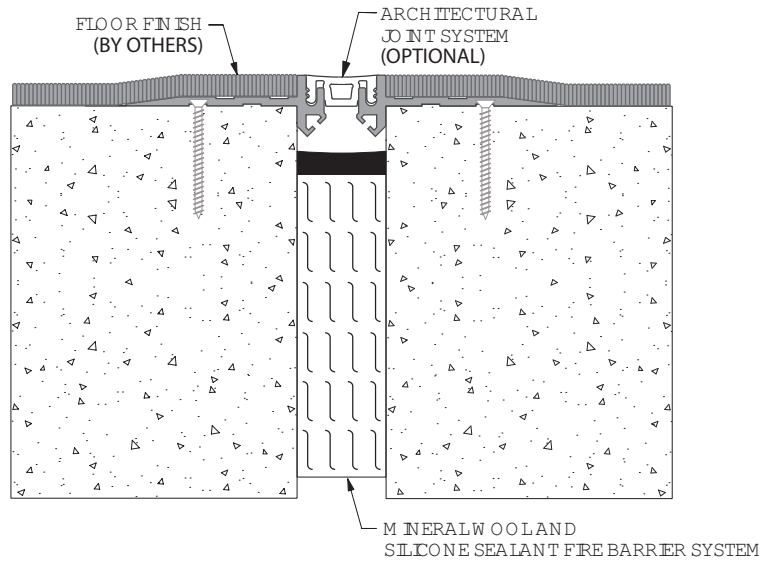


IPC.890/REV.9

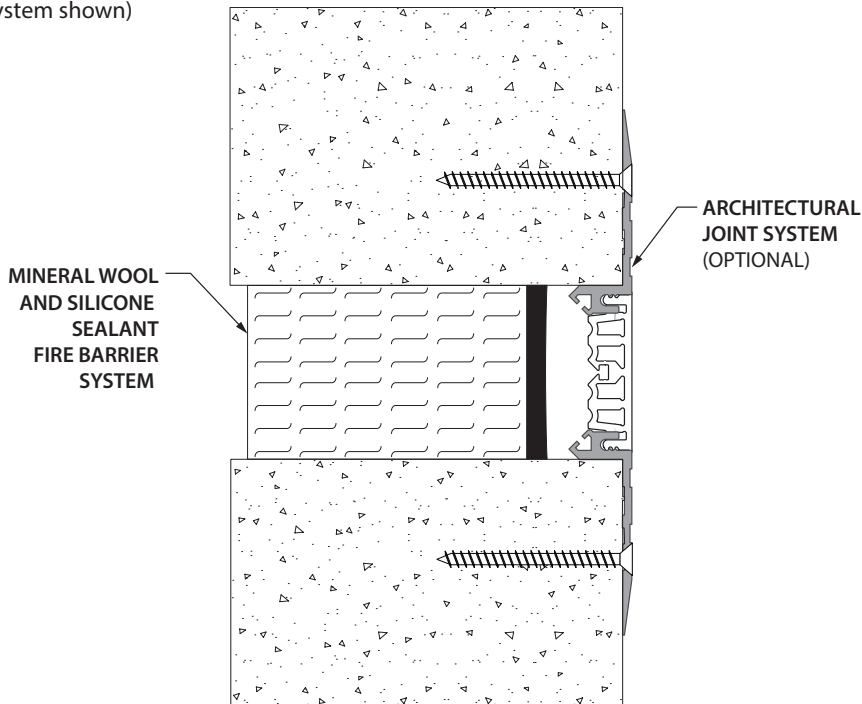
925 Series

Fire Barrier Systems

Mineral Wool & Sealant Fire Barrier System
(1" (25mm) floor system shown)



Mineral Wool & Sealant Fire Barrier System
(2" (50mm) wall system shown)



Mineral Wool & Sealant Coverages

Width of Structural Gap	Mineral Wool Width
1" [25mm] - 1-1/2" [38mm]	2" [50mm]
1-1/2" [38mm] - 2-1/4" [56mm]	3" [75mm]
2-1/2" [56mm] - 3" [75mm]	4" [102mm]

Coverage (Installed 1/4" [6mm] thick)	LF/1" Jt	LF/2" Jt	LF/3" Jt
20 oz. [591ml] Cartridge	12 LF [3.5m]	6 LF [1.8m]	4 LF [1.2m]
4.5 US Gallon Pail	332 LF [101.3m]	166 LF [50.7m]	111 LF [33.8m]

Install Tools - Sausage Gun