

COLOR MATCHED SILICONE CAULK (SUPPLIED BY INPRO)

NOTE:
 SURROUNDING SUBSTRATE MUST MATCH OR EXCEED PERFORMANCE CAPABILITIES OF THE 990 FIRE RATED FOAM TO ACHIEVE FIRE RATING

990 FOAM LENGTH - 6' 6" [1981mm]
 PLATE LENGTH - 10' [3048mm]

System	Joint Width		Seal Height		Movement ±			
	US	mm	US	mm	Compression		Expansion	
	US	mm	US	mm	US	mm	US	mm
995V3-050 DS	1/2"	13	4"	102	1/4"	6	1/4"	6
995V3-100 DS	1"	25	4"	102	1/2"	13	1/2"	13
995V3-150 DS	1 1/2"	38	4"	102	3/4"	19	3/4"	19
995V3-200 DS	2"	51	4"	102	1"	25	1"	25
995V3-250 DS	2 1/2"	64	4"	102	1 1/4"	32	1 1/4"	32
995V3-300 DS	3"	76	4"	102	1 1/2"	38	1 1/2"	38
995V3-350 DS	3 1/2"	89	4"	102	1 3/4"	44	1 3/4"	44
995V3-400 DS	4"	102	4"	102	2"	50	2"	50
995V3-450 DS	4 1/2"	114	4"	102	2 1/4"	57	2 1/4"	57

FINISH: MILL

• **JOINTMASTER**
 EXPANSION JOINT SYSTEMS
 A DIVISION OF INPRO

DATE: 2-25-16
 SCALE: 1:2
 DOC: CADJM.181/Rev3

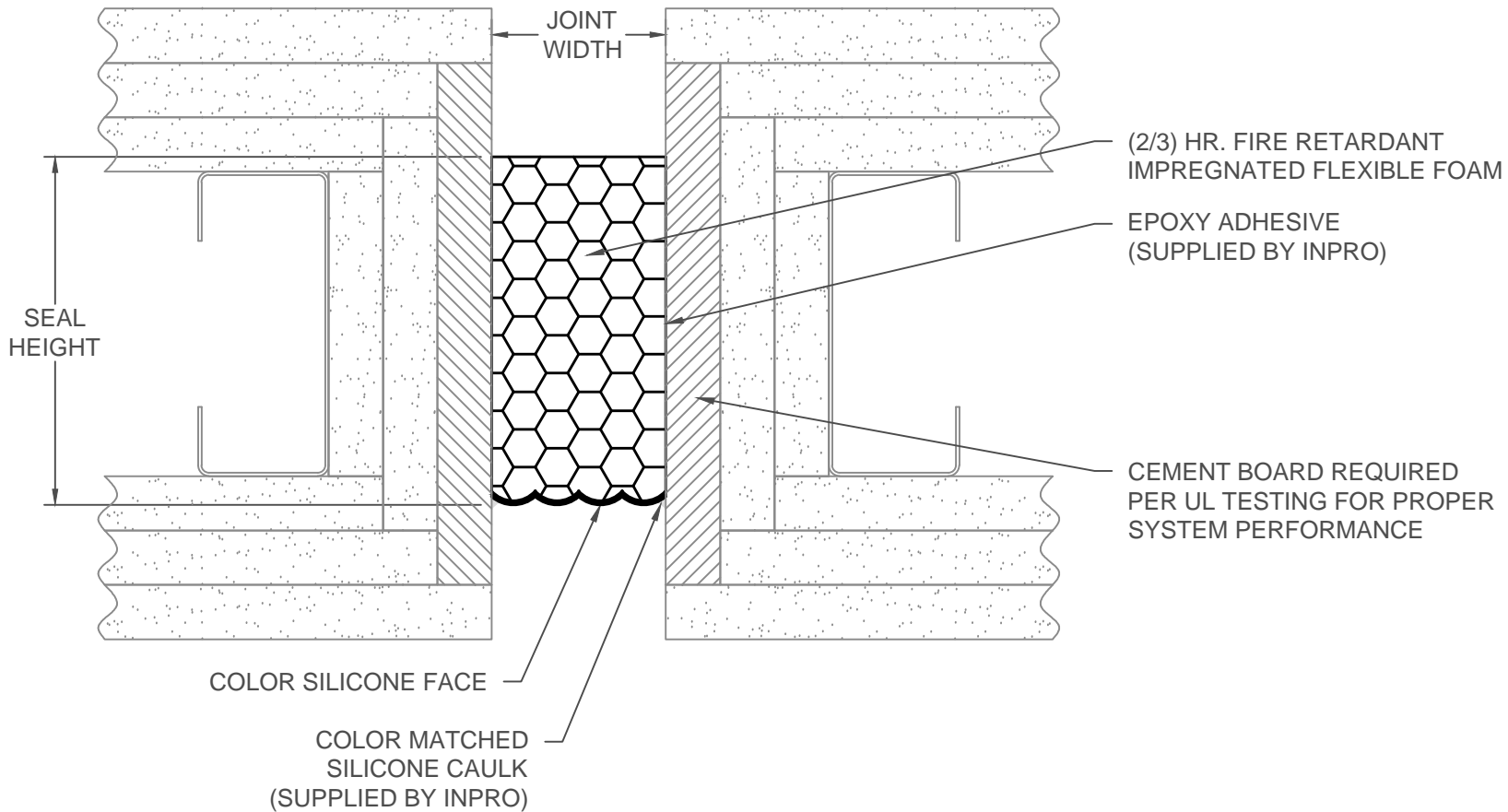
APPLICATION-
 WALL/WALL AND WALL/CORNER
 3 HOUR FIRE RATED

PROJECT:

CUSTOMER:

LOCATION:

inpro.



NOTE:
 SURROUNDING SUBSTRATE MUST
 MATCH OR EXCEED PERFORMANCE
 CAPABILITIES OF THE 990 FIRE
 RATED FOAM TO ACHIEVE FIRE
 RATING

990 FOAM LENGTH - 6' 6" [1981mm]
 PLATE LENGTH - 10' [3048mm]

System	Joint Width		Seal Height		Movement ±			
	US	mm	US	mm	Compression		Expansion	
	US	mm	US	mm	US	mm	US	mm
995V3-050	1/2"	13	4"	102	1/4"	6	1/4"	6
995V3-100	1"	25	4"	102	1/2"	13	1/2"	13
995V3-150	1 1/2"	38	4"	102	3/4"	19	3/4"	19
995V3-200	2"	51	4"	102	1"	25	1"	25
995V3-250	2 1/2"	64	4"	102	1 1/4"	32	1 1/4"	32
995V3-300	3"	76	4"	102	1 1/2"	38	1 1/2"	38

FINISH: MILL

• **JOINTMASTER**
 EXPANSION JOINT SYSTEMS
 A DIVISION OF INPRO

DATE: 2-25-16

SCALE: 1:2

DOC: CADJM.181/Rev3

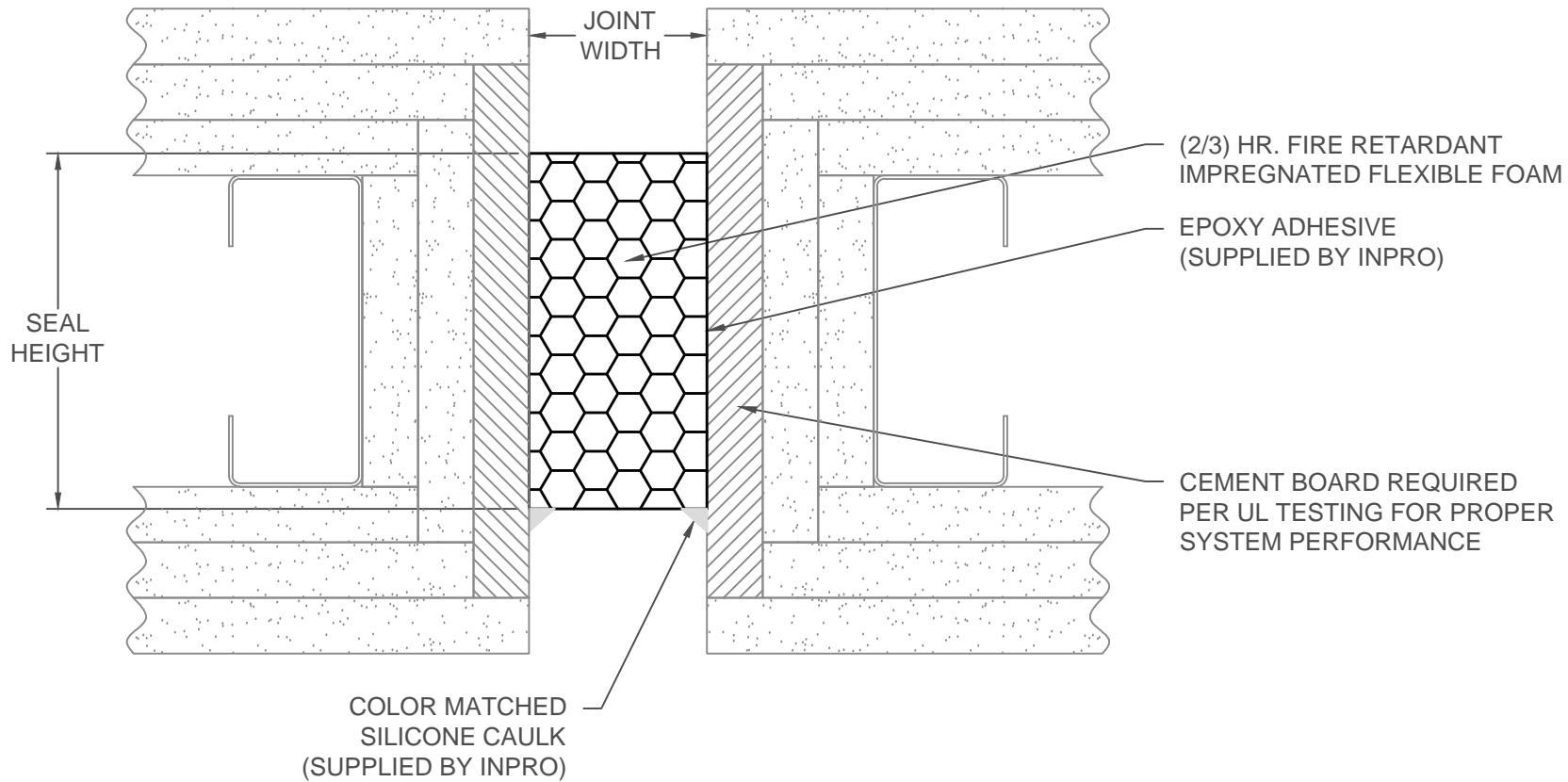
APPLICATION-
 WALL/WALL AND WALL/CORNER
 3 HOUR FIRE RATED

PROJECT:

CUSTOMER:

LOCATION:

inpro.



NOTE:
 SURROUNDING SUBSTRATE MUST
 MATCH OR EXCEED PERFORMANCE
 CAPABILITIES OF THE 990 FIRE
 RATED FOAM TO ACHIEVE FIRE
 RATING

990 FOAM LENGTH - 6' 6" [1981mm]
 PLATE LENGTH - 10' [3048mm]

System	Joint Width		Seal Height		Movement ±			
	US	mm	US	mm	Compression		Expansion	
	US	mm	US	mm	US	mm	US	mm
995V3-050 UC	1/2"	13	4"	102	1/4"	6	1/4"	6
995V3-100 UC	1"	25	4"	102	1/2"	13	1/2"	13
995V3-150 UC	1 1/2"	38	4"	102	3/4"	19	3/4"	19
995V3-200 UC	2"	51	4"	102	1"	25	1"	25
995V3-250 UC	2 1/2"	64	4"	102	1 1/4"	32	1 1/4"	32
995V3-300 UC	3"	76	4"	102	1 1/2"	38	1 1/2"	38

FINISH: MILL

• **JOINTMASTER**
 EXPANSION JOINT SYSTEMS
 A DIVISION OF INPRO

DATE: 2-25-16

SCALE: 1:2

DOC: CADJM.181/Rev3

APPLICATION-
 WALL/WALL AND WALL/CORNER
 3 HOUR FIRE RATED

PROJECT:

CUSTOMER:

LOCATION:

inpro.