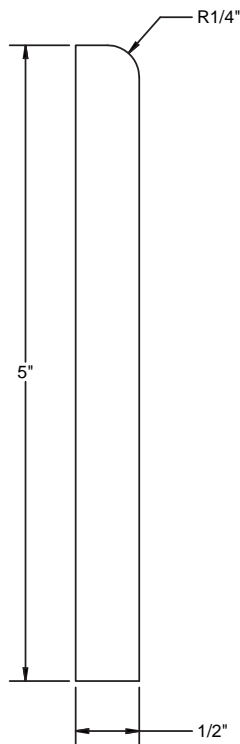
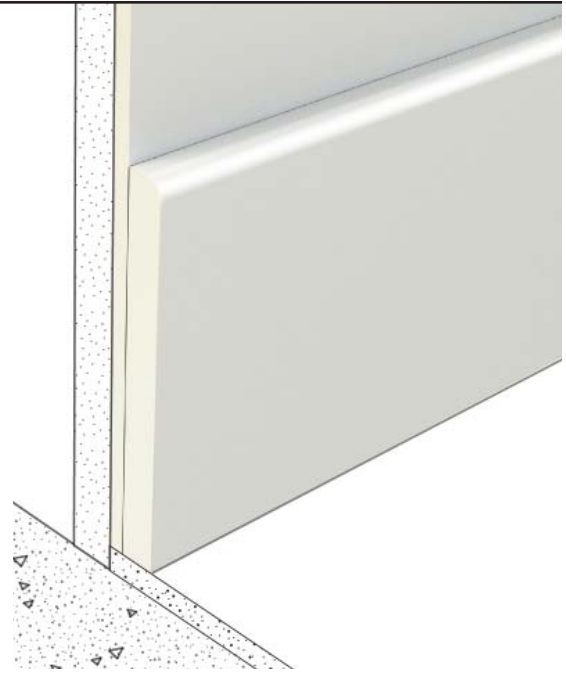


BioPrism[®] Solid Surface Wall Base



- Available in 8' lengths
- Surface is non-porous
- Easy to clean surface resists heat, stains, chips and cracks
- Surface is solid throughout making it easy to renew and repair
- Tested and certified per ANSI standards to ensure product longevity
- Products backed by a 10-year limited product warranty
- Has been tested and meets GREENGUARD Environmental Institute's and the state of California's requirements for low emitting products
- Has been tested and meets the GREENGUARD Gold requirements for low emitting products suitable for use in schools and healthcare facilities
- The composition of BioPrism[®] Solid Surface produces slight color variation between production cycles due to the innate and complex blending of natural minerals and man-made resin.

IPC.2016/Rev.1

Inprocorp.com • 800.222.5556 • 262.679.9010
World Headquarters S80 W18766 Apollo Drive, Muskego, WI 53150 USA

ENDURANT[®] •
WASHROOM SYSTEMS
A DIVISION OF INPRO[®]

BioPrism® Solid Surface Wall Base

Suggested Specifications

PART 1 – GENERAL

1.01 SUMMARY

A. BioPrism® Solid Surface Wall Base

1.02 SECTION INCLUDES

A. Wall Base

1.03 REFERENCES

A. American National Standards Institute (ANSI)

B. International Cast Polymer Alliance (ICPA)

C. National Fire Protection Association (NFPA)

1.04 SYSTEM DESCRIPTION

A. Performance Requirements: Provide wall base that conform to the following requirements of regulatory agencies and the quality control of Inpro® Corporation.

1. Provide solid surface material that conforms to ANSI/ICPA SS-1 for workmanship and finish, structural integrity and material characteristics.

2. Fungal and Bacterial Resistance: Provide BioPrism® Solid Surface that does not support fungal or bacterial growth as tested in accordance with ASTM G-21 and ASTM G-22.

3. Fire Performance Characteristics: Provide BioPrism® Solid Surface Wall Base conforming to the NFPA class A fire rating as determined by ASTM E-84.

1.05 SUBMITTALS

A. Product Data: Manufacturer's printed product data for each type of wall base specified.

B. Samples: Verification samples minimum of 1 1/2" x 3" samples indicating color and pattern.

C. Manufacturer's Installation Instruction: Printed installation instructions for wall base.

1.06 DELIVERY, STORAGE AND HANDLING

A. Deliver materials in unopened factory packaging to the job site

B. Inspect materials at delivery to assure that specified products have been received.

C. Store in original packaging in an interior climate controlled location away from direct sunlight.

1.07 PROJECT CONDITIONS

A. Environmental Requirements: Products must be installed in an interior climate controlled environment.

1.08 WARRANTY

A. Standard BioPrism® Solid Surface Limited 10 Year Warranty against material and manufacturing defects.

PART 2 – PRODUCTS

2.01 MANUFACTURER

A. Acceptable Manufacturer: Inpro® Corporation, PO Box 406 Muskego, WI 53150 USA; Telephone: 800.222.5556, Fax: 888.715.8407, Inprocorp.com

B. Substitutions: Not permitted

C. Provide all solid surface systems from a single source.

2.02 MANUFACTURED UNITS

A. BioPrism® Solid Surface Wall Base

1. Wall Base

a. Wall Base (DSWB396), 1/2" thick x 5" high x 96" long, protrudes 1/2" from the wall.

2.03 MATERIALS

A. BioPrism® Solid Surface : Wall Base shall be manufactured from polyester/acrylic blended resins with natural filler material.

2.04 FINISHES

A. BioPrism® Solid Surface : Wall Base shall be manufactured from a bio polyester and acrylic hybrid resin with natural filler material.

B. The composition of BioPrism® Solid Surface produces slight color variation between production cycles due to the innate and complex blending of natural minerals and man-made resin.

PART 3 - EXECUTION

3.01 EXAMINATION

A. Examine areas and conditions in which BioPrism® Solid Surface Wall Base will be installed.

3.02 PREPARATION

A. General: Prior to installation, clean area to remove dust, debris and loose particles.

3.03 INSTALLATION

A. General: Install components plumb and level, scribe adjacent finishes, in accordance with approved shop drawings and recommended installation instructions.

3.04 CLEANING

A. At completion of the installation, clean surfaces in accordance with the Inpro® Decorative Surfaces clean-up and maintenance instructions