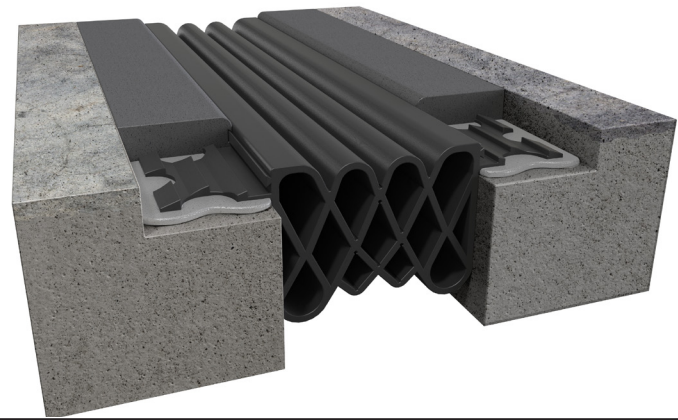


CR-S Series Compression Seal

CR - Architectural Applications



Movement Rating: 50%

Product Guide



- ▶ Heavy pedestrian / vehicular loading capabilities
- ▶ Appropriate for horizontal applications
- ▶ Comprised of Santoprene TPV Rubber: Superior movement while being highly resistant to UV degradation, extreme temperatures, and chemicals
- ▶ Installed in blockout with elastomeric concrete header & primer/ tack coat (See installation instructions)
- ▶ Heat weldable for watertight seams
- ▶ Industry unique profile creates a crisp, slightline with no linear waviness
- ▶ Profile engineered for improved installation ease
- ▶ Color Seals available- Contact your Rep. for more information

Application	System	Nominal Joint Width Range		Minimum Joint Width		Maximum Joint Width		B Blockout Dim.		H1 Seal Height		H2 Seal Depth	
		US	mm	US	mm	US	mm	US	mm	US	mm	US	mm
Architectural Compression Seals	CR-200S	1 5/8"-2 3/8"	41-60	1"	25	3"	75	3"	75	2 3/16"	56	2 5/16"	59
	CR-300S	2 1/2"-3 3/8"	63-86	1 1/2"	38	4 1/2"	114	3"	75	3 5/16"	84	2 7/16"	87
	CR-400S	3 1/2"-4 3/8"	89-111	2"	51	6"	152	3"	75	3 5/16"	84	2 7/16"	87

IPC.886/REV.15

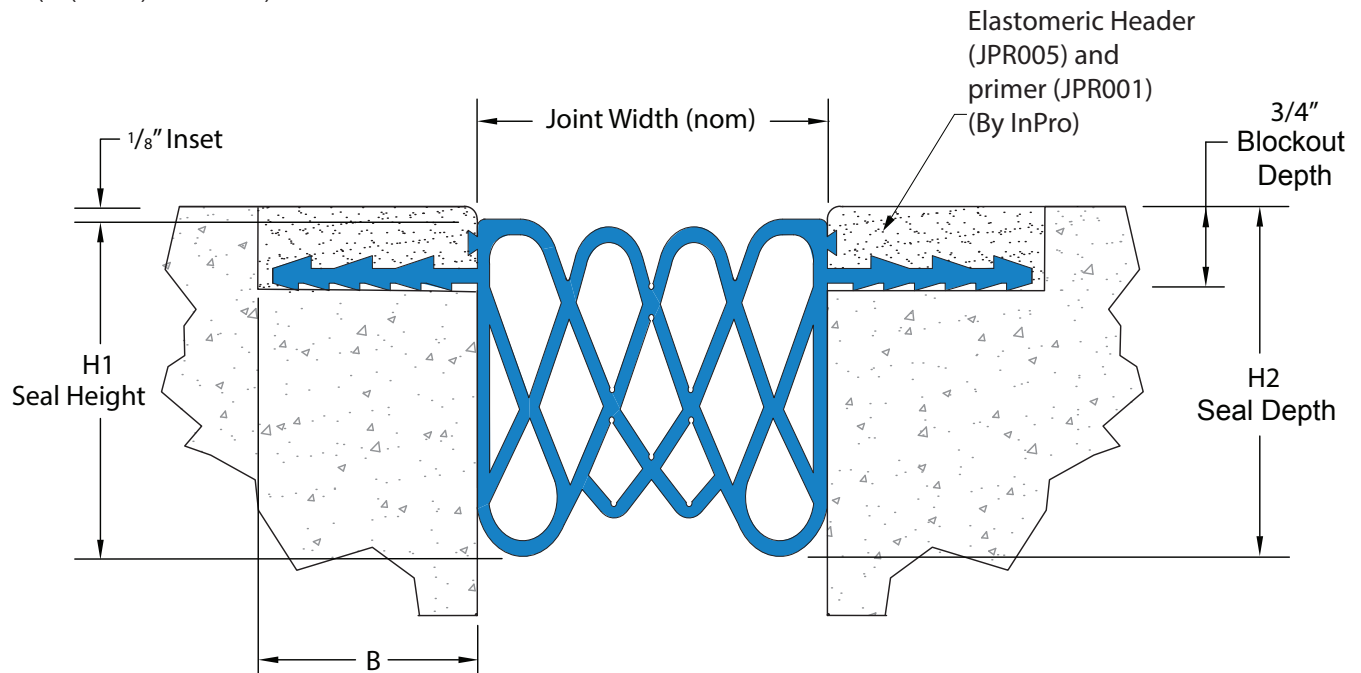
Inprocorp.com • 800.222.5556 • 262.679.9010
 World Headquarters S80 W18766 Apollo Drive, Muskego, WI 53150 USA

JOINTMASTER®
 EXPANSION JOINT SYSTEMS
 A DIVISION OF INPRO®

CR-S Series

Compression Seal Systems

CR-S Compression Seal
(3" (75mm) seal shown)



Block Dim Note: Blockout dimensions provided are recommended minimum dimensions and relate directly to header coverage. If blockout dimensions are greater than recommended dimensions contact your JointMaster Representative for additional header.

Inprocorp.com • 800.222.5556 • 262.679.9010

World Headquarters S80 W18766 Apollo Drive, Muskego, WI 53150 USA

JOINTMASTER®
EXPANSION JOINT SYSTEMS
A DIVISION OF INPRO®